

Exhibit 6
CSAH 101 PROJ 9931
TRAFFIC FLOW INFORMATION

Growth Rates on County Roads
are ported at 1.5% per year
Growth Rates on City Streets
are ported at 1% per year

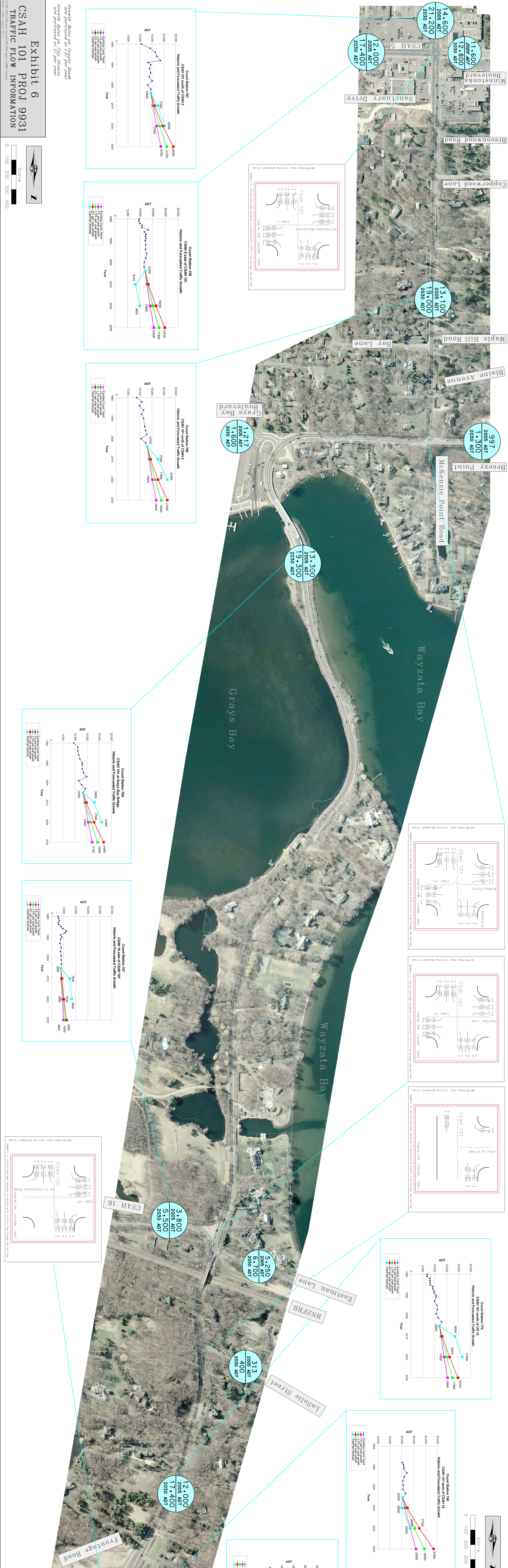
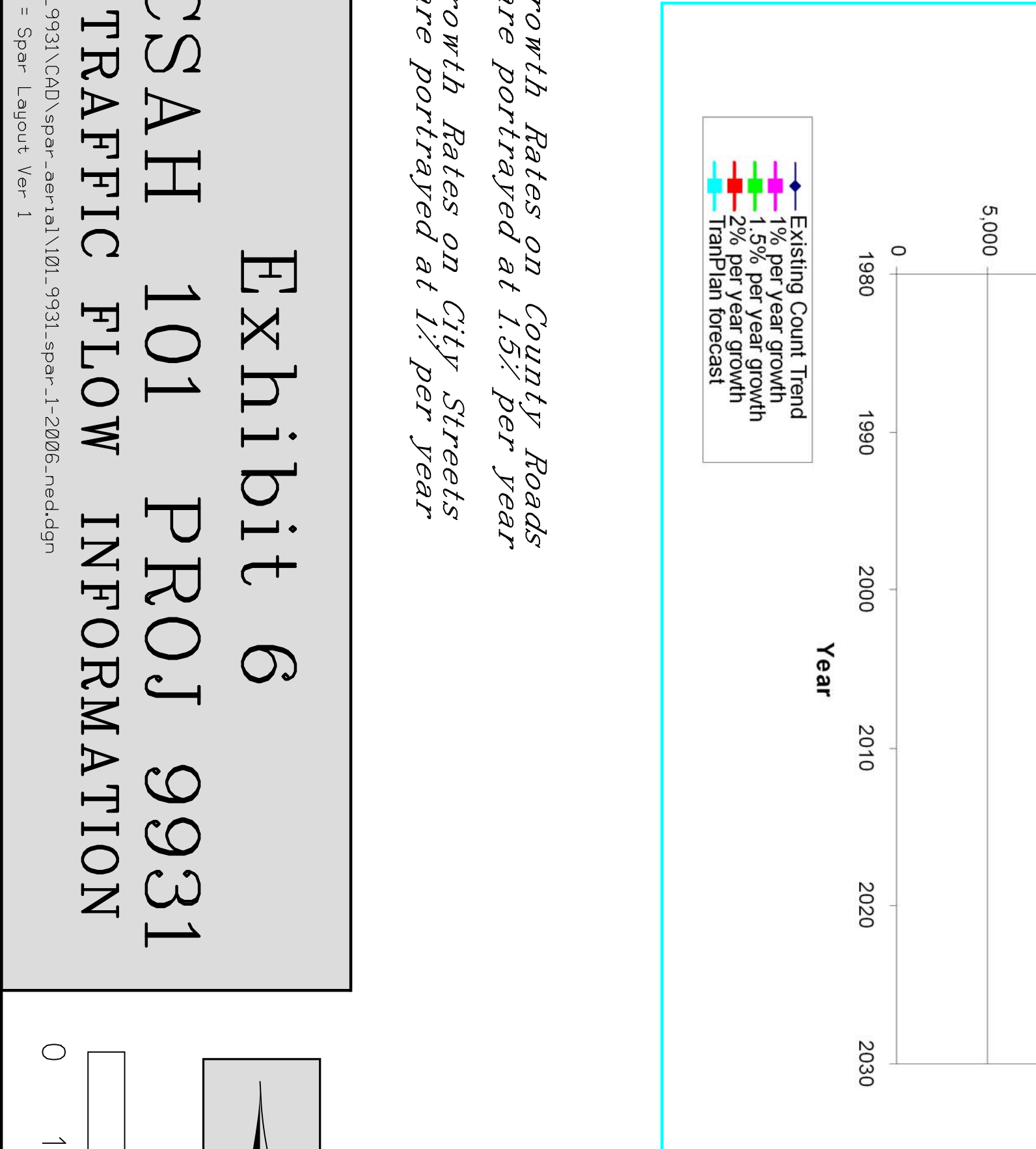
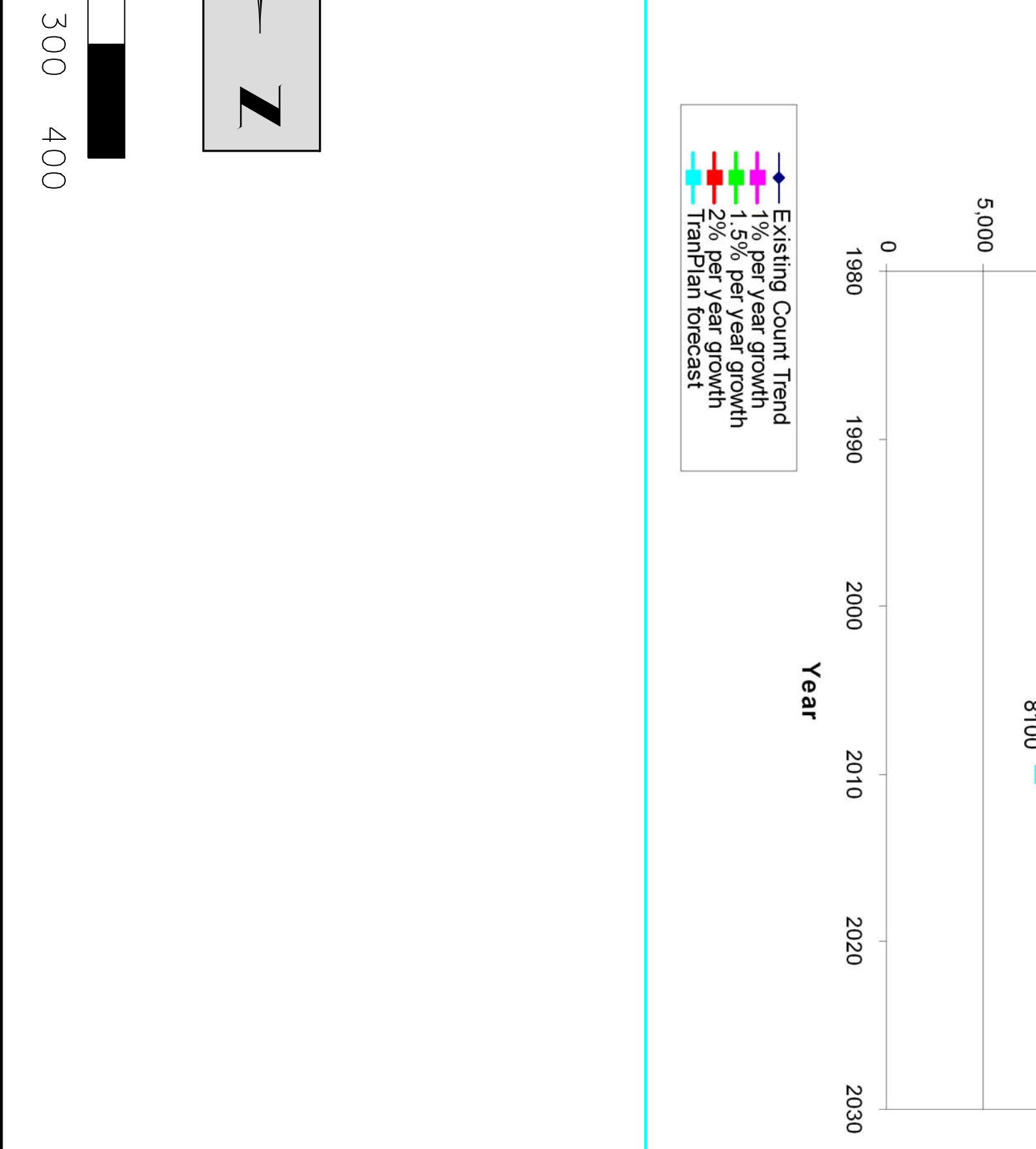
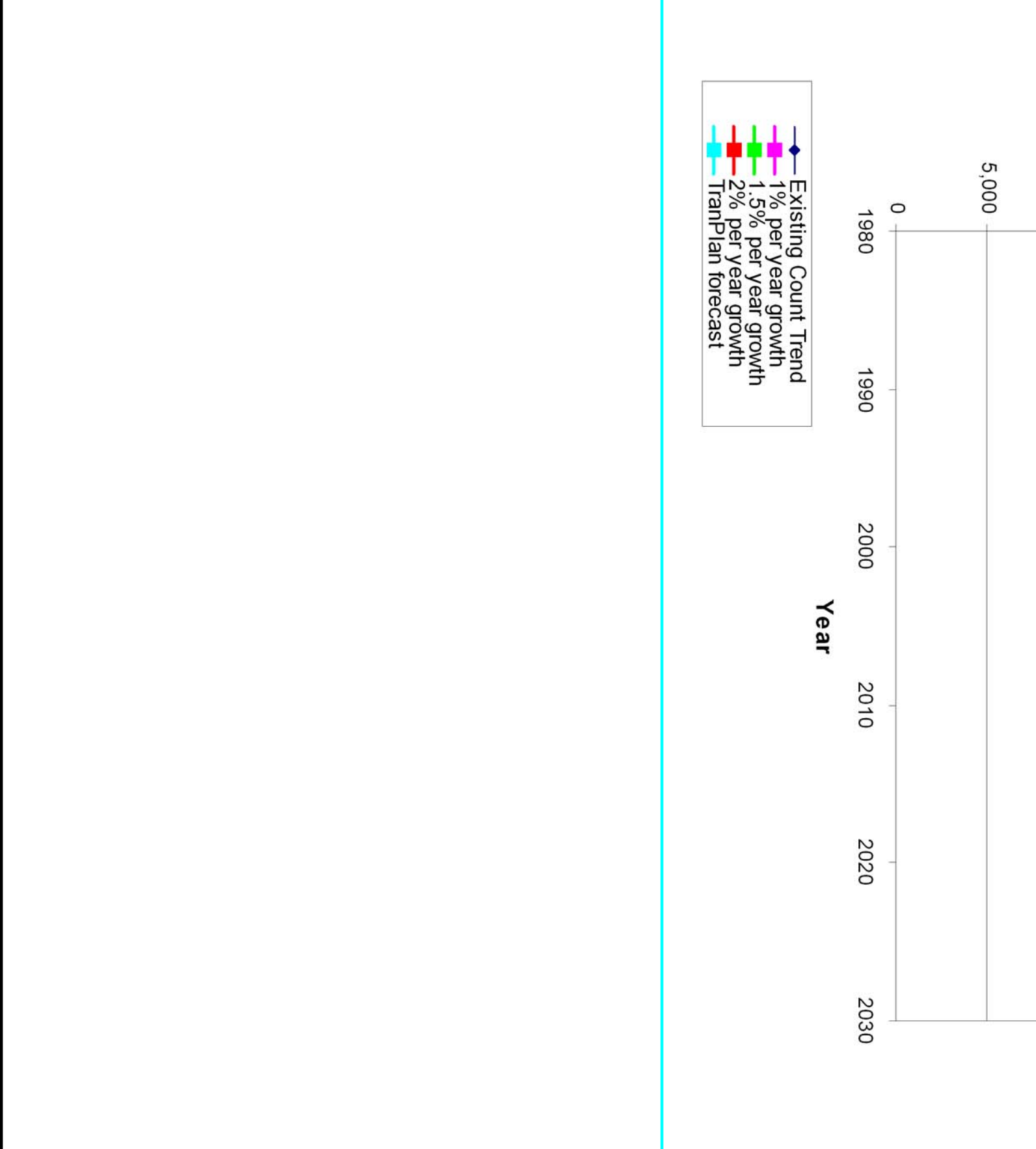
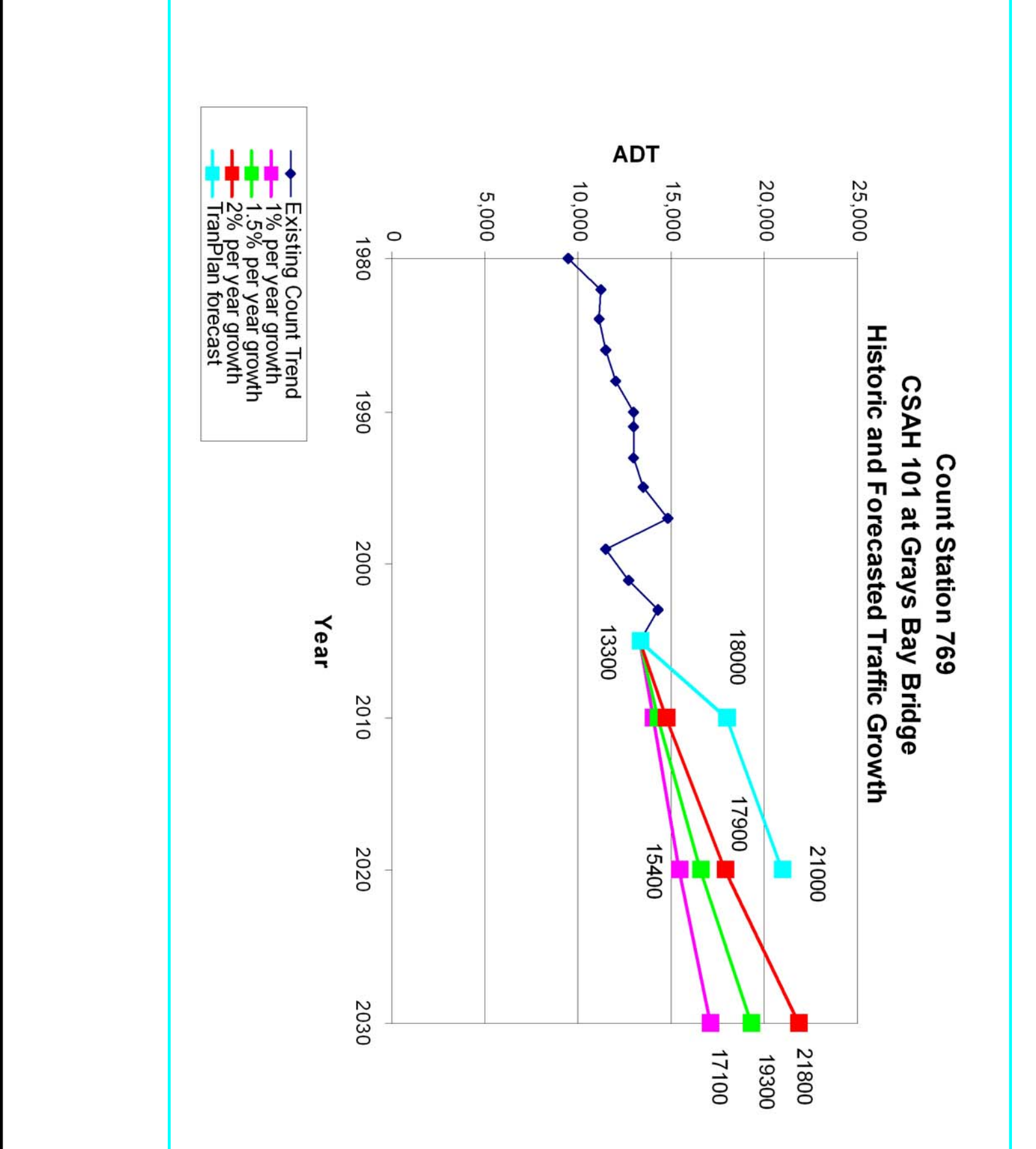
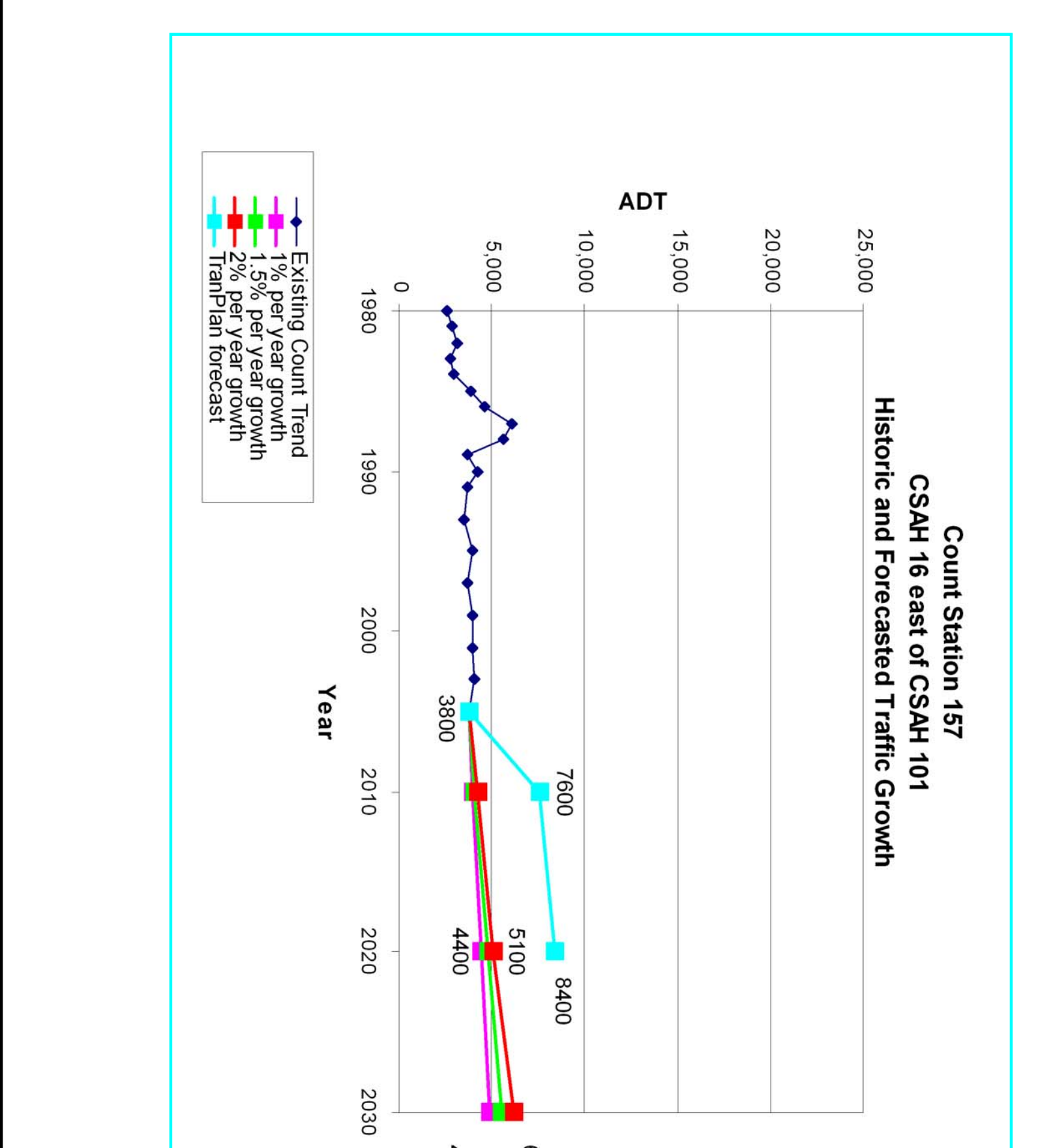
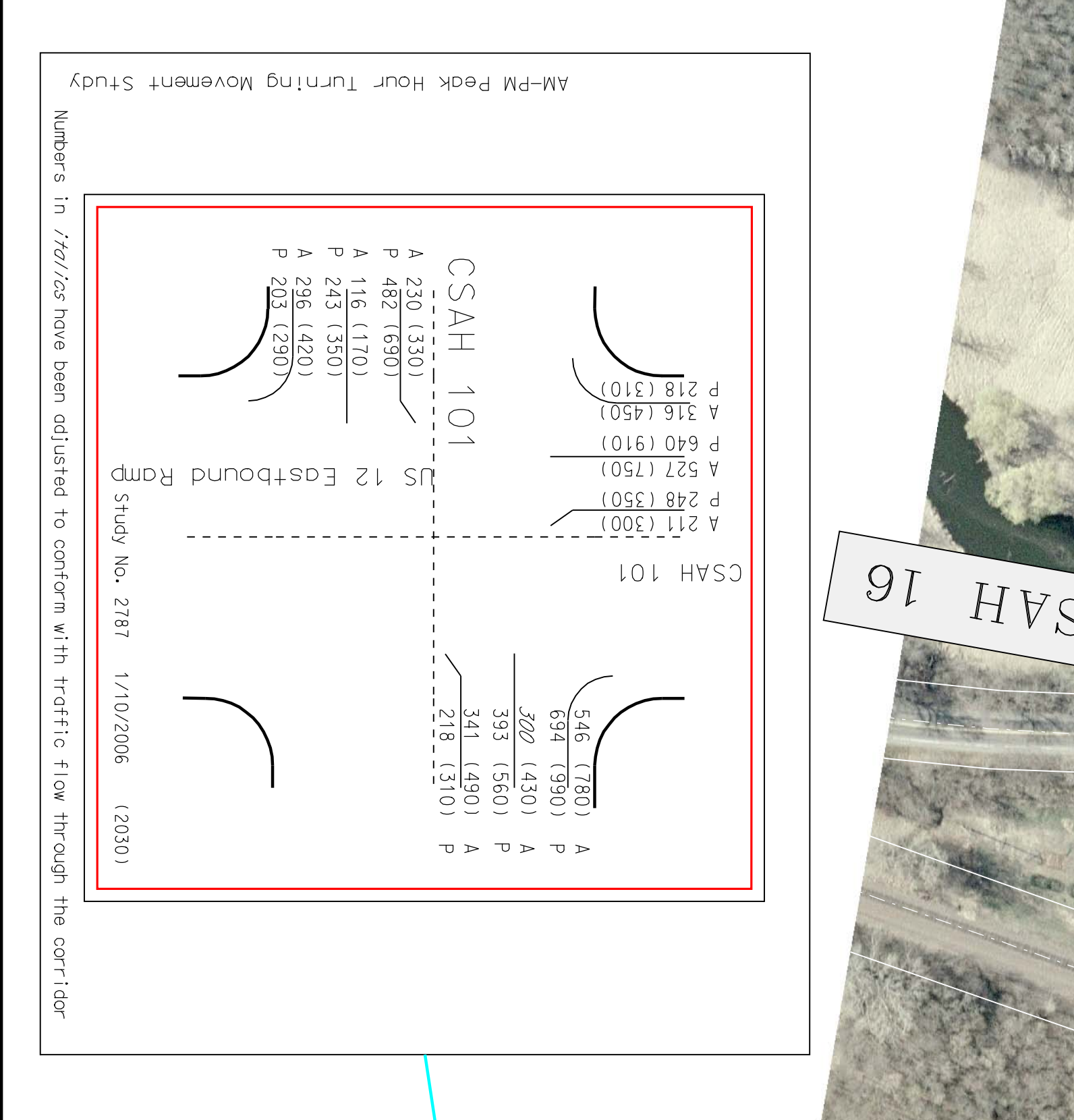
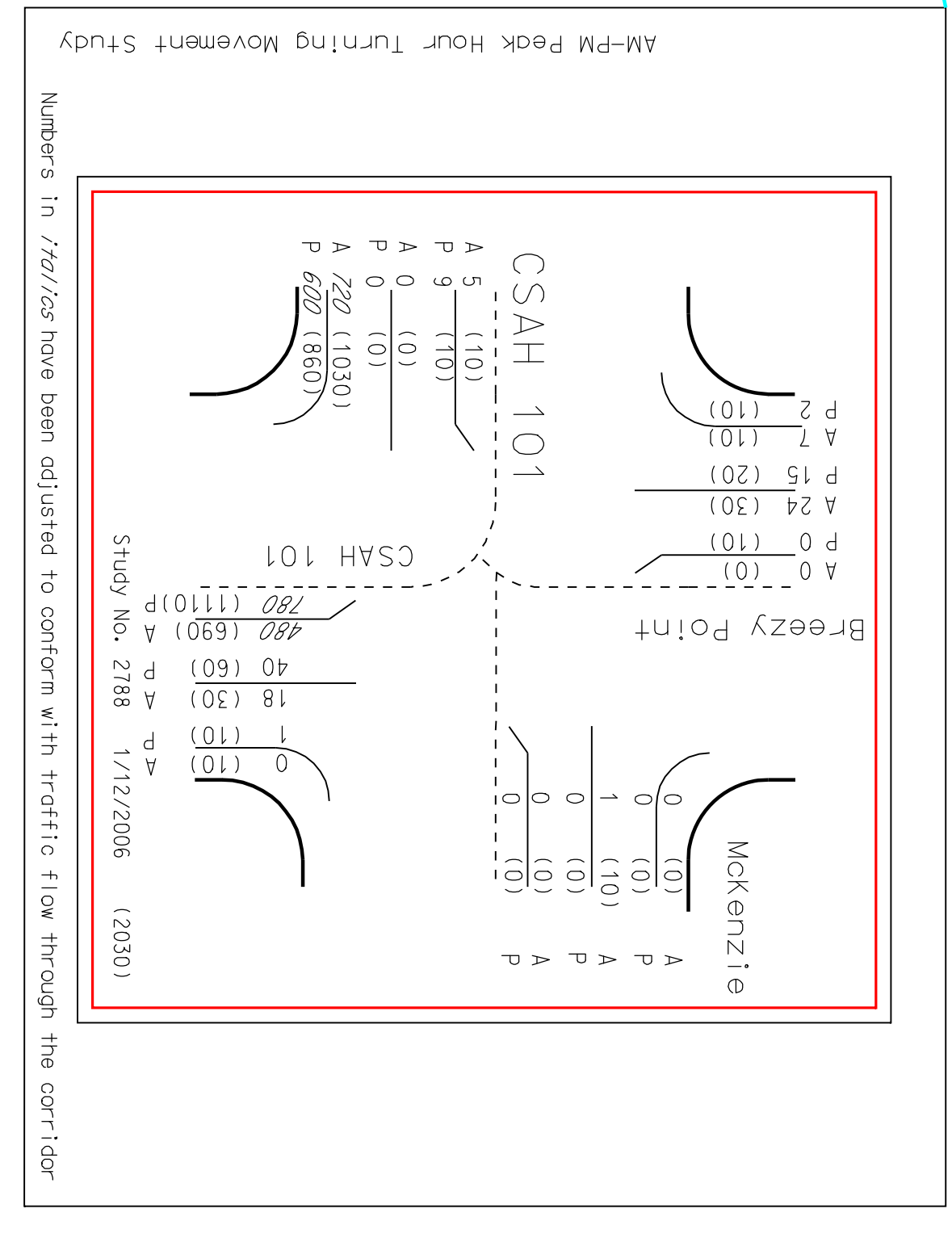
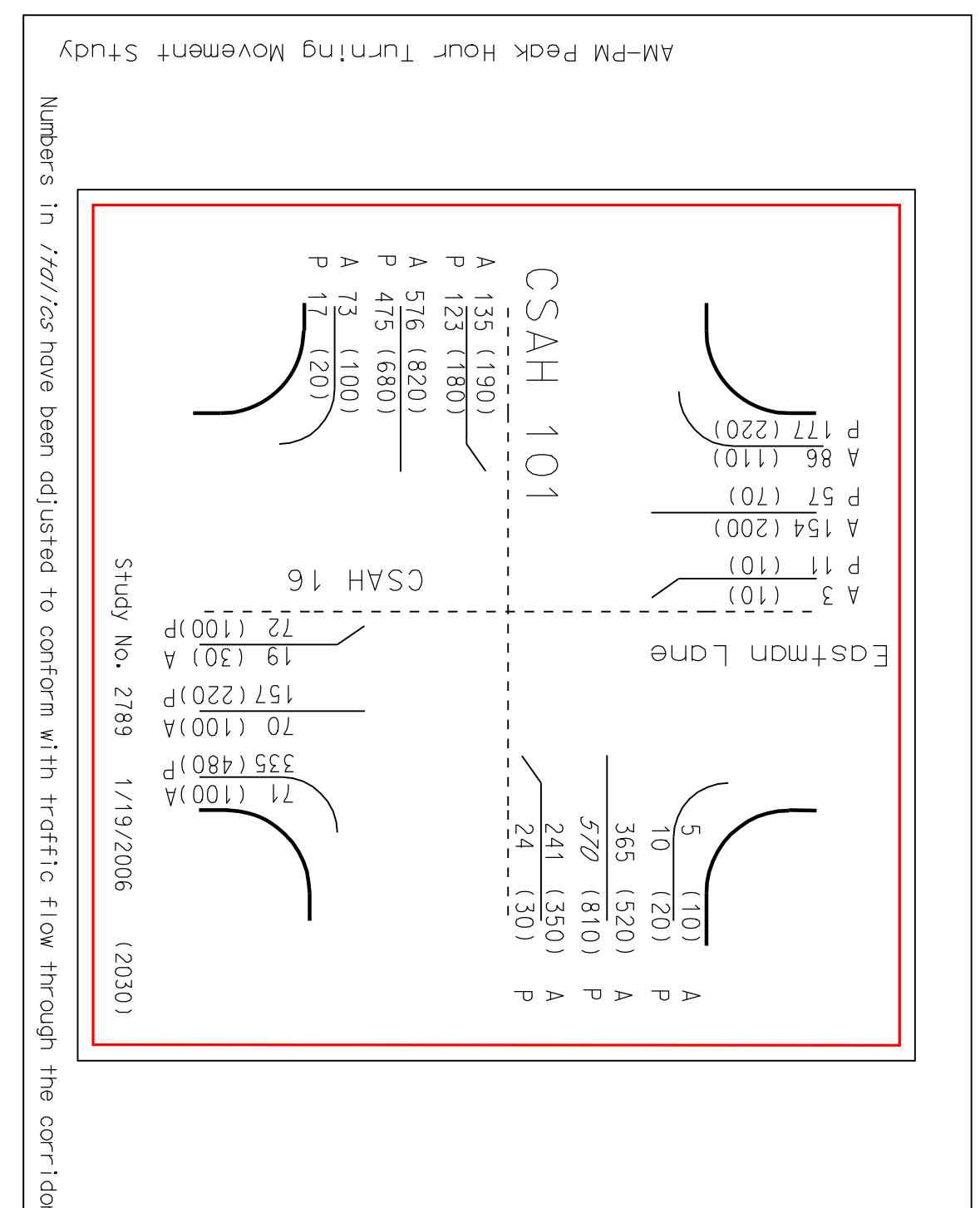
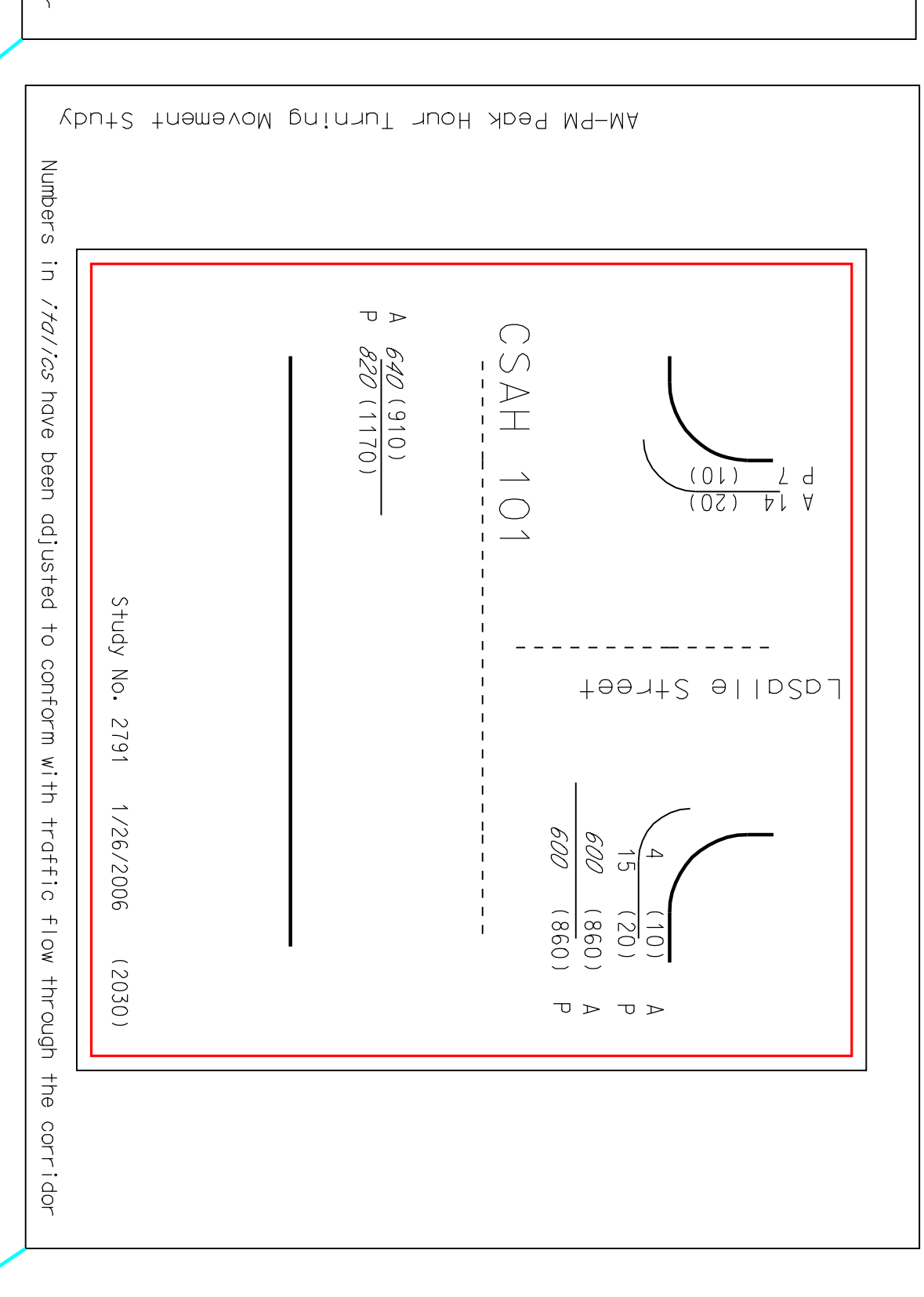
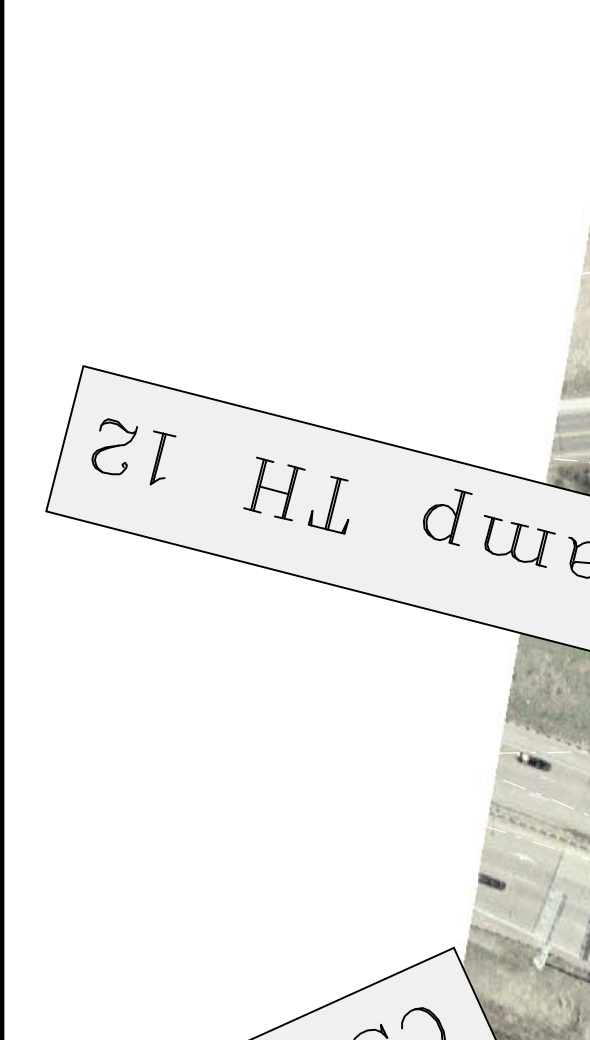
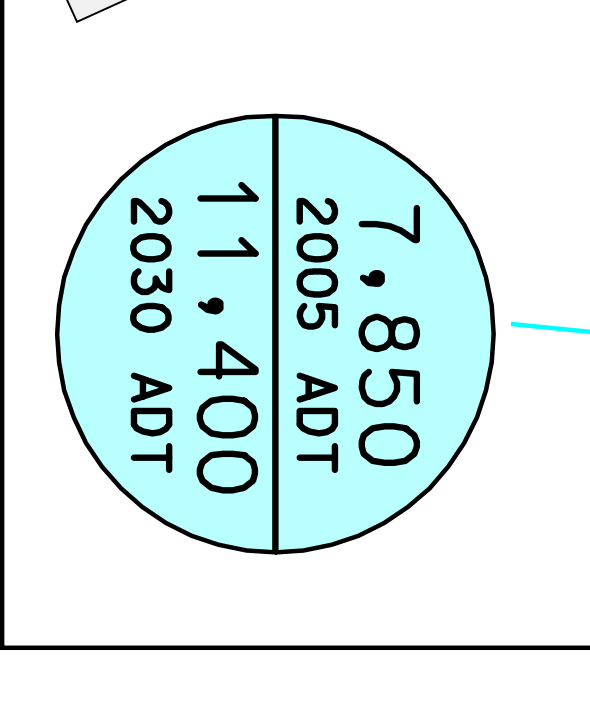
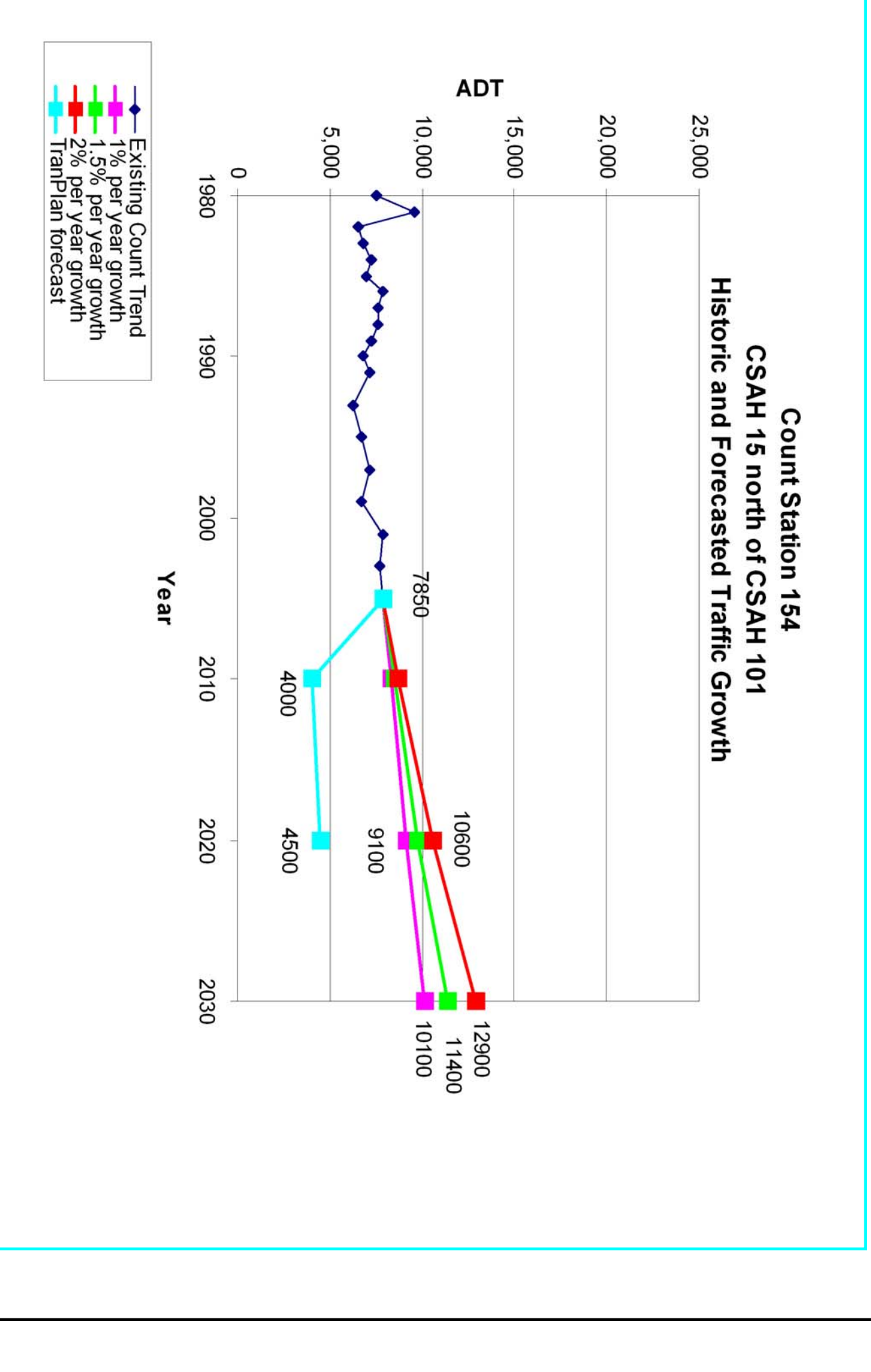
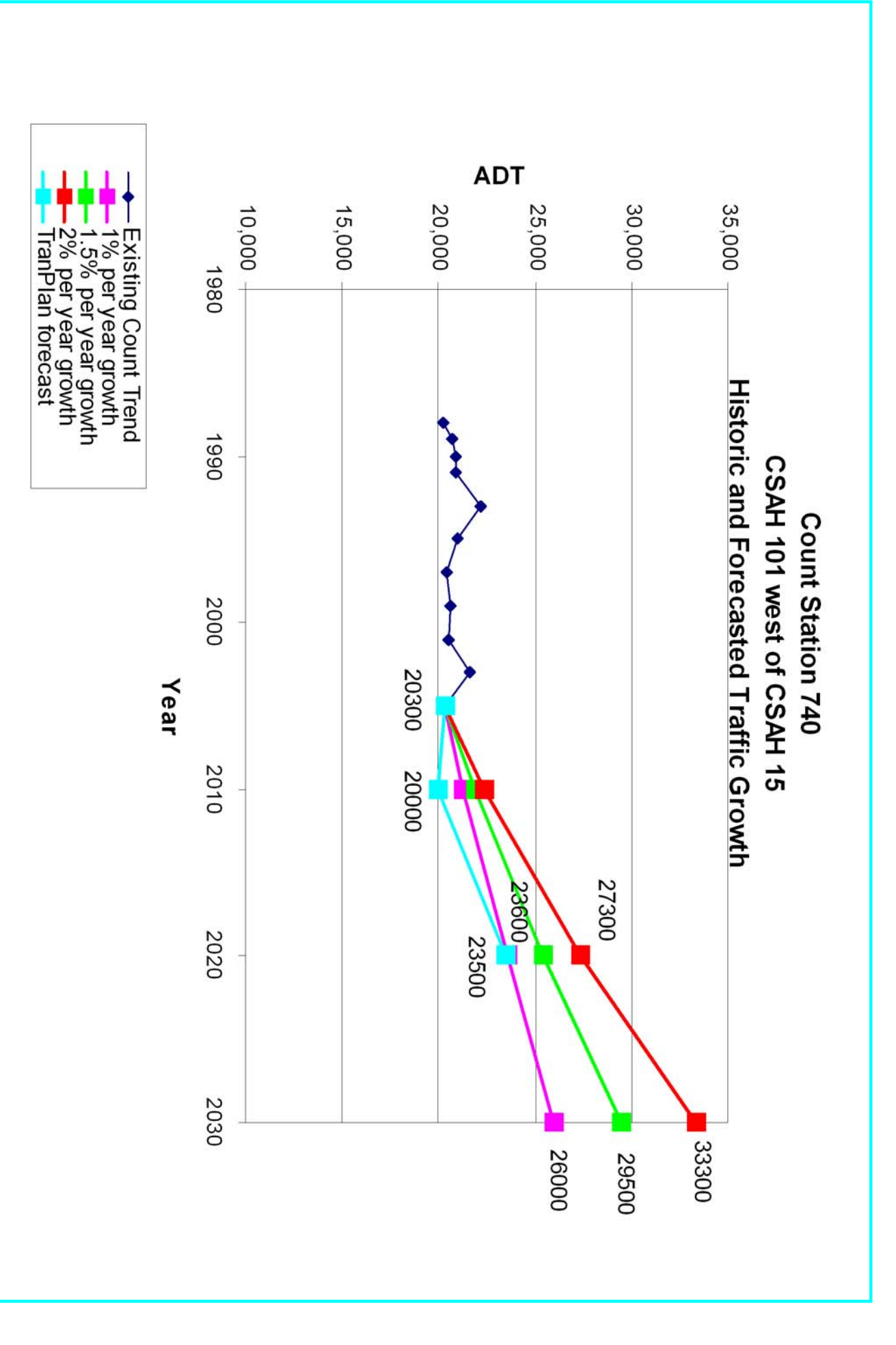
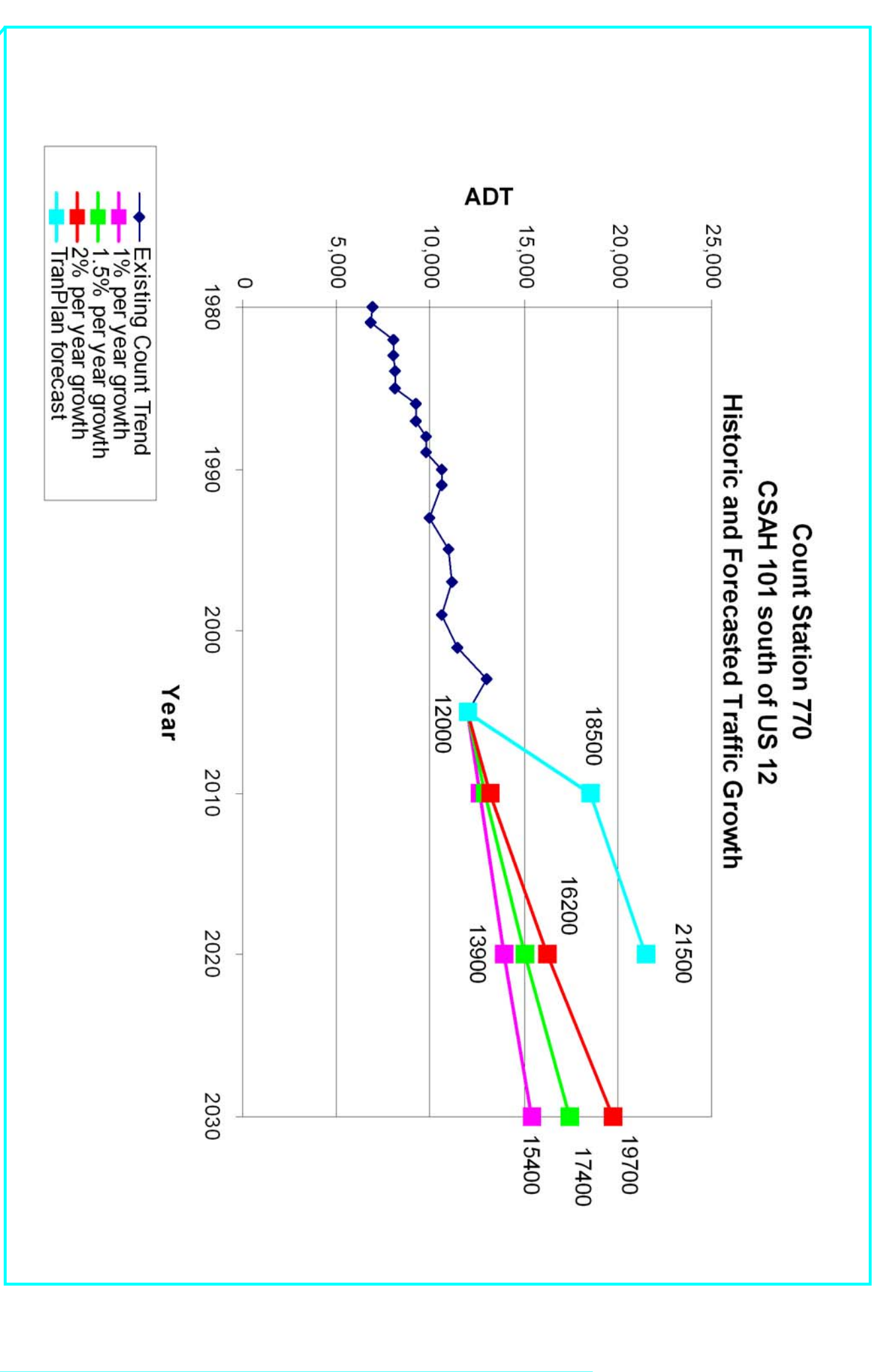
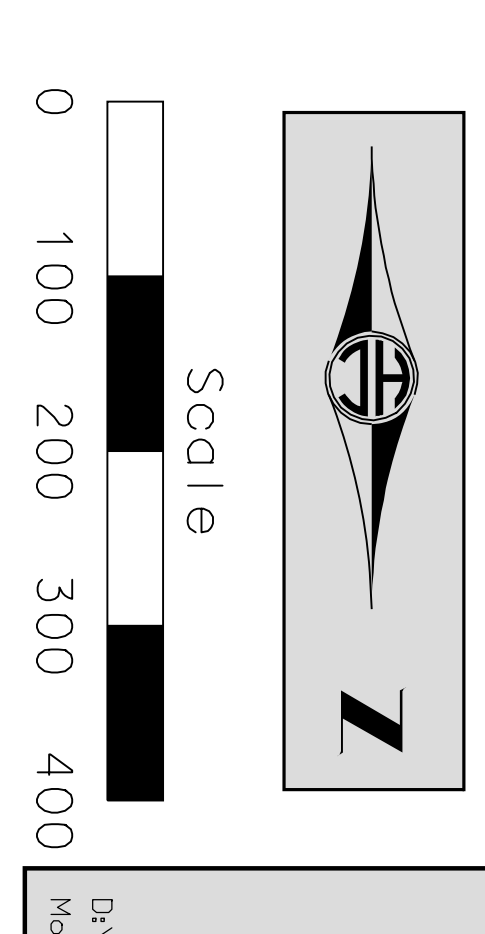


Exhibit 6
CSAH 101 PROJ 9931
TRAFFIC FLOW INFORMATION

Growth Rates on County Roads
are ported at 1.5% per year
Growth Rates on City Streets
are ported at 1% per year

